

Taking Action for *Climate Justice* What can I do?

Lake Nokomis Lutheran ❖ April 7, 2024



Where we're going today

01

WHERE AM I?

A Snapshot Summary

02

WHO AM I?

Getting Grounded

03

METHODS

For Sustainable Practice

04

ACTIONS

Sí se puede!

05

Discussion

My Next Step

The background features watercolor-style illustrations of green leaves and branches in the corners, and blue wavy patterns resembling water or clouds. The text is centered on a white background.

Buff Grace

lived outside a lot
parented two kids w/ my spouse
arrested for climate action
watched too much Netflix



- Thousands across MN responding to climate change
- One of 40 affiliates in U.S.
- Centering Justice & Equity
- www.mnipl.org





01

WHERE AM I?

Our Context



Where am I?

In human time



200+ Years into the Industrial -
Fossil Fuel Revolution



3300+ Years of Judaism /
2000+ Years of Christianity



160,000+ of Human 'Civilization'

NOT TO SCALE

Where am I?



Era of Human Flourishing

- Home and building heating / cooling
- Explosion of manufacturing
- Transportation of goods and people
- Refrigeration & Storage
- Pharmaceuticals and Health advances
- Plastics, Computer chips, AI, and more . . .

but 2 big problems . . .

Unequal Benefits



Wealth to a few

- Colonialism
- Racism
- Generational poverty



Over-Extraction + Pollution



- Taking more than the earth can naturally replenish in lifetime(s)
- Concentrating substances in amounts that cannot be naturally absorbed
- Creating and casting off unnatural elements that cannot be absorbed

Where am I?

In earth time



Industrial - Fossil Fuel
Revolution (250 years)

125,000+ Years stable
temperature

650,000+ Years stable
atmospheric carbon

NEAR TO SCALE

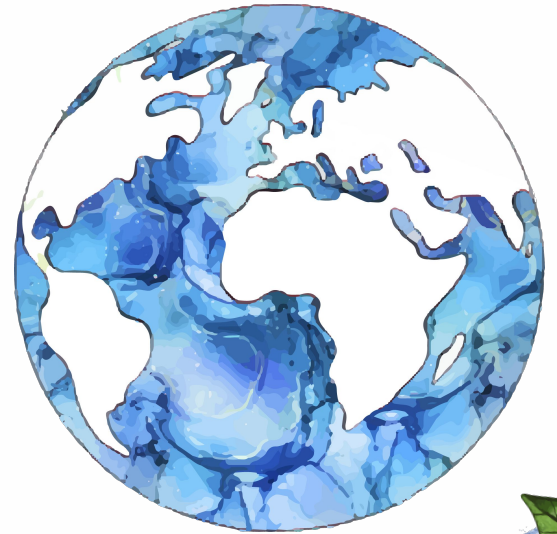


Where am I?

a testing time for humanity



OR





02

WHO AM I?

A Person Called



WHO AM I?



WHO AM I?



PARTNER

With God of Universe



HUMAN

“A little lower than the angels. . .”



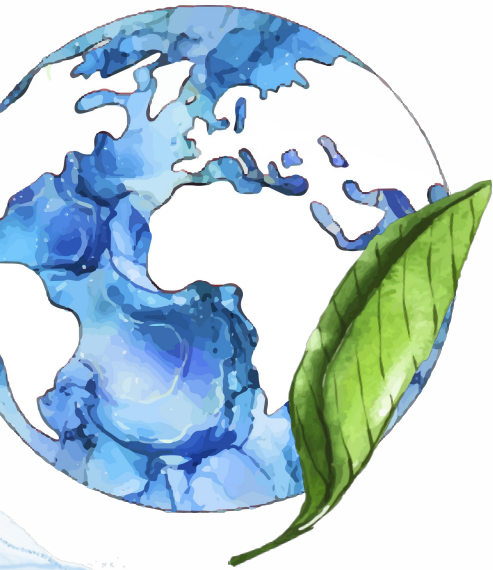
GARDENER

I am needed



SIBLING

Member of the Earth Family



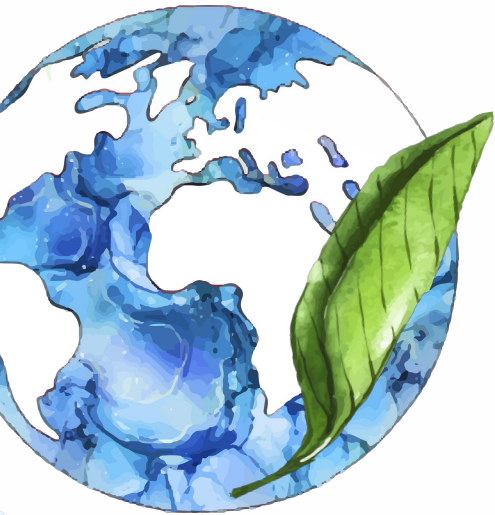
“I had that cognitive shift, that moment of, ‘Oh my god, we’re all connected. Oh my god, the planet is so beautiful. Oh my god, what can I do to make it better when I get home?’ And in coming home, the things that bothered you? They don’t bother you.”

– *Leland D. Melvin*



“I realized up there that our planet is not infinite. It’s fragile. That may not be obvious to a lot of folks, and it’s tough that people are fighting each other here on Earth instead of trying to get together and live on this planet. We look pretty vulnerable in the darkness of space.”

— *Alan Shepard*



“The Earth was small, light,
and blue, and so touchingly
alone. . . our home that must
be defended like a holy relic.”

– *Aleksei Leonov*

**What the Earth
will be – it is
in my hands.**





03

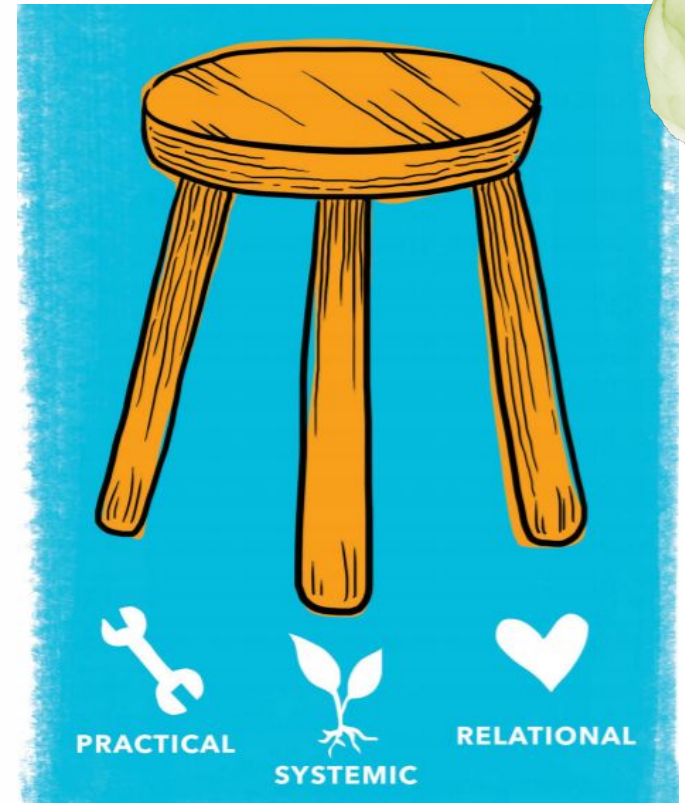
Methods

For a Sustainable Practice



MNIPL's 3-Legged Stool

Work a little in each leg at the same time.



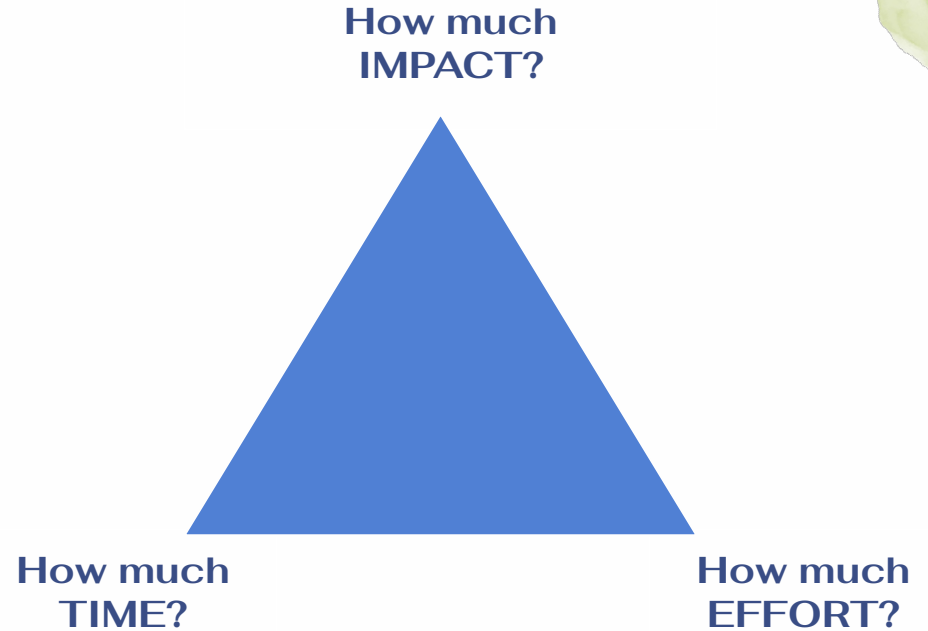
Ayana Elizabeth Johnson's Venn Diagram

Find your *'should do'* spot.



Buff's Triangle Map

Be honest with yourself.
&
What's my low-hanging fruit?





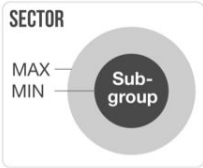
Find a Community of Action

Fun, accountability, and resources

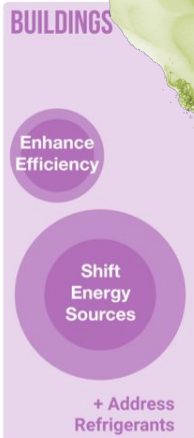
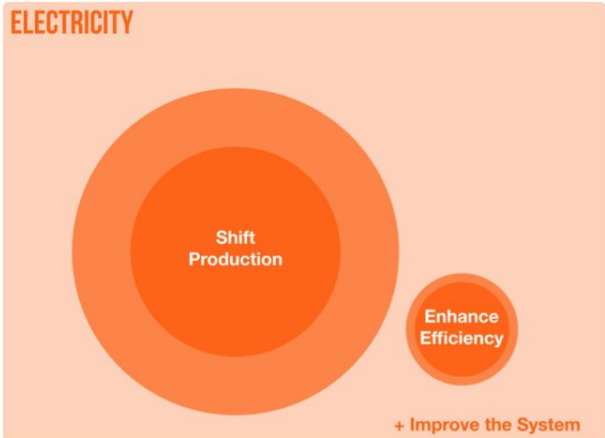
- Lake Nokomis Lutheran
- Minneapolis Synod Eco-Faith
- MN Interfaith Power & Light
- Neighborhood Group
- an Action Affinity Group
 - E.g. EV owners club
- *All We Can Save Circle*

DRAWDOWN FRAMEWORK FOR CLIMATE SOLUTIONS

How to Read It
 Size represents potential emissions reductions (CO₂-eq (Gt)) 2020-2050



1. REDUCE SOURCES



2. SUPPORT SINKS



COASTAL & OCEAN SINKS
 Protect & Restore Ecosystems

ENGINEERED SINKS
 Remove & Store Carbon

3. IMPROVE SOCIETY





04

Actions

What exactly can I do?



WHAT ARE WE CHANGING?

What is my
relationship
with fossil
fuels?

What is my
relationship
with God and
Earth?

What is my
relationship
with other
people?

WHAT ARE WE CHANGING?



TRANSPORT

How do I get around?



ENERGY

How do I power my home
and body?



INVESTMENTS

What do I buy?

<https://youtu.be/Og-p4ZbO1HU?si=WIYyaxUnb9UrU415>

ELECTRIFY EVERYTHING



ELECTRIFY EVERYTHING

REWIRING
AMERICA

[Policy Hub](#) ▾

[Data & Maps](#) ▾

[News & Publications](#) ▾

[Get Involved](#) ▾

[Careers](#)

[About Us](#)

[Savings Calculator](#) <

Electrify Everything in Your Home

A Guide to Comfy, Healthy, Carbon-Free Living

We've been telling you why to do it. Now we've put together the best advice on how to do it. *Electrify Everything in Your Home* is a guide to replacing all of your fossil-fueled appliances with modern electric ones. Once you electrify:

- your home will be more comfortable,
- your indoor and outdoor air quality will be healthier,
- your monthly bills will be lower.



Kicking Carbon Addiction



Efficiency

Insulation, Thermostats,
Simplifying life



House Systems

HVAC, Heating water,
cooking food, laundry



Home Energy

Go Solar /
Choose Wind

Kicking Carbon Addiction



Efficiency

Insulation, Thermostats,
Simplifying life

- **CEE Home Audit \$100**
 - includes free upgrades
- **Insulation and Air Sealing**
 - Xcel rebates available
 - Up to \$1,600 on weatherization
- **Electric Panel**
 - Up to \$4,000 rebate
 - Up to \$600 tax credit
- **Electric Wiring**
 - Up to \$2,500 rebate

Kicking Carbon Addiction



House Systems

HVAC, Heating water,
cooking food, laundry

- **Air Source Heat Pumps**
 - Up to \$2,000 tax credit
 - Up to \$8,000 rebate
- **Geo-thermal Systems**
 - 30% tax credit
- **Heat Pump Hot Water**
 - Up to \$2,000 tax credit
- **Heat Pump Clothes Dryer**
 - Up to \$840 rebate
- **Induction Stove**
 - Up to \$840 rebate

ELECTRIFY EVERYTHING



[FOR HOMEOWNERS](#)

[FOR CONTRACTORS](#)

[INCENTIVES AND FINANCING](#)

[BLOG](#)

[CONTACT](#)

[Overview](#)

[Heat Pump FAQs](#)

[Case Studies and Guides](#)

[Preferred Contractor Network](#)

Transforming the way we heat and cool our homes.

A **modern, variable speed heat pump** is the clear choice for **energy efficient heating and cooling** in Minnesota.

[For Homeowners](#)

[For Contractors](#)

Kicking Carbon Addiction

- **Rooftop Solar System**
 - 30% tax credit
 - Net-Metering Compensation
 - Xcel incentive
 - Avoid Xcel rate hikes
- **Other Options**
 - Community Solar Gardens
 - Xcel Renewable * Connect



Home Energy

Go Solar /
Choose Wind

Kicking Carbon Addiction



[Take Action](#) [Building a Movement](#) [Stories](#) [About Us](#) [Donate](#) [Join](#)

Energy Efficiency Resources for Households

MNIPL also offers resources and information to help individuals in your communities or networks choose energy efficiency and renewable energy for their homes. Whether they're hoping to do a home energy audit, add insulation to their homes, or switch from gas to electric systems in their homes, we can help. Check out the resources below!

- Check out [these resources on heat pumps](#), which are energy efficient tools for cooling *and* heating.
- [Rewiring America](#) offers a helpful planner that will generate a personalized plan for your home, lifestyle, and priorities.
- Get started with an energy audit – this tool will help identify places to start when it comes to making your home more energy efficient. Xcel customers can sign up with the [Home Energy Squad](#) - folks who live outside

The logo for Solar United Neighbors features a stylized sun icon on the left, composed of radiating lines. To the right of the sun, the words "SOLAR UNITED" are stacked above "NEIGHBORS" in a large, bold, orange sans-serif font.

SOLAR UNITED NEIGHBORS

Learn about the free residential solar service of our partner Solar United Neighbor and their buyers' groups that have helped thousands go solar. [Click here](#) for the Twin Cities group and [click here](#) for the Duluth-Arrowhead group.

Kicking Carbon Addiction



Transport

EVs, Bicycles, Walking



Eat Gently

Eat closer to the planet
and the plants



Waste

Compost, avoid Plastics,
care with toxics, etc.

Kicking Carbon Addiction



Transport

EVs, Bicycles, Walking

- **Electric Vehicles**
 - \$7,500 federal rebate (new)
 - \$2,500 state rebate (new)
 - \$4,000 federal rebate (used)
 - \$ 600 state rebate (used)
 - EV Charger credit for rural / low-income
- **E-Bikes**
 - Basic costs \$1,000 to \$2,500
 - High-end up to \$6,000

scooters, hoverboards, skateboards, buses, trains, trolleys, carpools, tricycles, bicycle, unicycles, wagons, running, hiking, walking

Kicking Carbon Addiction



Eat Gently

Local, plant-based

- **Eat More Plants**
 - *Top household action by Drawdown*
 - Less beef, less dairy
- **Reduce food waste**
 - Typical U.S. home wastes 30%
- **Eat closer to home**
 - Grow your own garden
 - CSA Subscriptions and U-Pick
 - Shop Farmers' Markets
 - Shop Food Co-ops
- **Hunt, Fish, Gather**

Kicking Carbon Addiction

- **Responsible Disposal**
 - *Refrigerators - Top Solution Drawdown*
 - *Electronics*
 - *Toxics and solvents*
- **Compost**
 - Reduces methane emissions from landfills
- **Hold Plastics System Responsible**
- **Avoid Plastics**
- **Recycle, not Wish-cycle**
 - Papers, glass, aluminum, metals
- **Reuse and Repurpose**
- **Notice need and want**

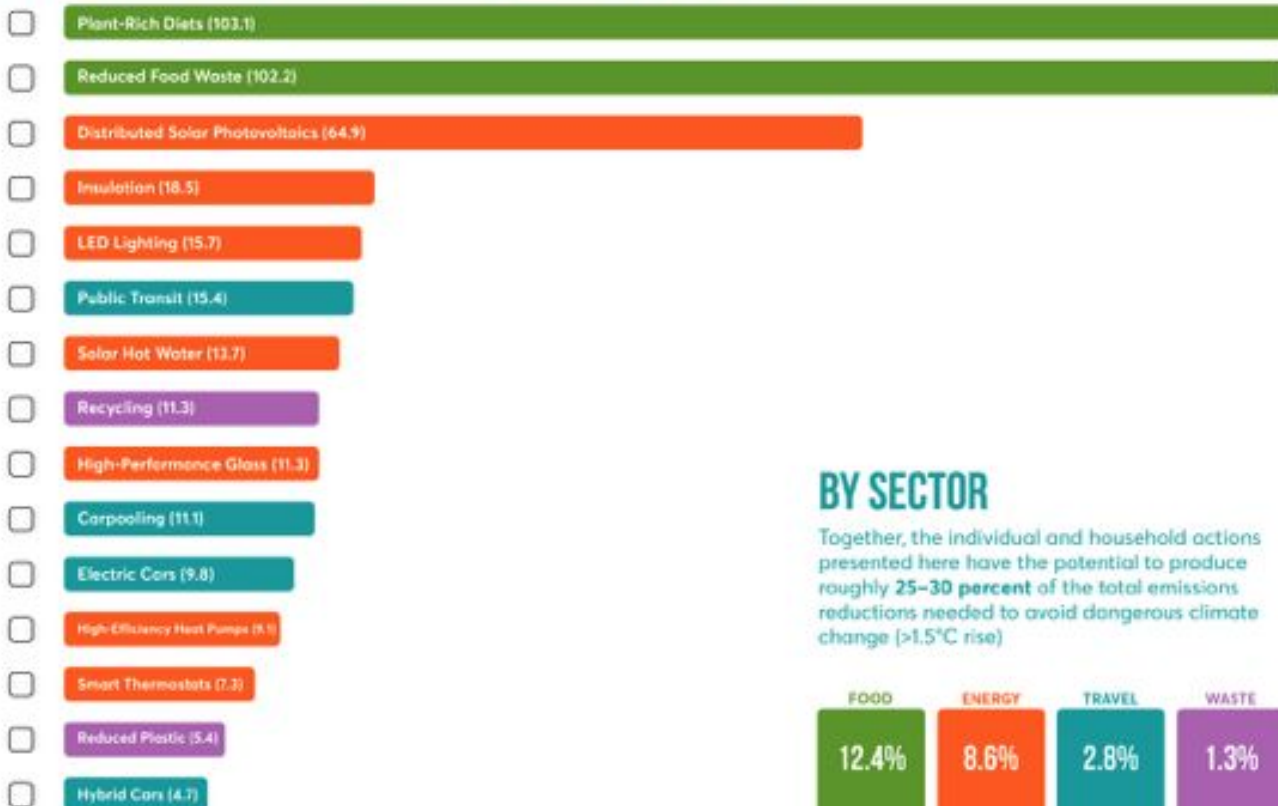


Waste

Compost, avoid Plastics, care with toxics, etc.

TOP 20 HIGH-IMPACT CLIMATE ACTIONS FOR HOUSEHOLDS AND INDIVIDUALS

The data presented here represents cumulative Gt CO₂-eq over 30 year period



BY SECTOR

Together, the individual and household actions presented here have the potential to produce roughly **25–30 percent** of the total emissions reductions needed to avoid dangerous climate change (>1.5°C rise)



Kicking Carbon Addiction

- **Are my finances invested in fossil fuels?**
 - Environmental, Social, Governance (ESG)
 - Social Responsible Investments (SRI)
 - What are my Asset Manager's values?
- **Value versus cost?**
- **Who / What is paying for my low cost?**



INVESTMENTS

What do I buy?

WAYS TO ADVOCATE

LUTHERAN ADVOCACY

Background Papers and
Clean Energy Talking Points



RISE + REPAIR

Join our rapid response team
Indigenous Rights + Climate Justice



WAYS TO ADVOCATE

Minnesota's 2024 legislative session is moving FAST!

Regulatory Protection of People, Land, Air, and Water ~ Environmental Justice ~ Reparations &

This is your call to get involved with advancing legislation on climate justice & Indigenous rights. Whatever capacity you have, you're welcome here. Please fill out the form in the community organizing hub by clicking the button below, which will subscribe you to the Rise & Repair eNews list. If you want to simply follow, that's ok ~ but if you indicate a greater interest in the form, someone from Rise & Repair will reach out and get you plugged in!

Sign Me Up!

WAYS TO ADVOCATE

WHAT GROUP(S) DO YOU BELONG TO?

- Neighborhoods
- Where you work
- Home Owner Associations
- Trade Associations
- City Council
- School District

WAYS TO ADVOCATE

PROJECT
DRAWDOWN.



♥ DONATE

JOB FUNCTION ACTION GUIDES

SHARE THIS PAGE



Employees are critical catalysts for climate action. As the engines that keep businesses running, you represent a range of skills and knowledge that can scale climate solutions in the workplace and beyond.

The Drawdown Labs Job Function Action Guides are **practical and shareable resources that highlight specific, high-impact climate actions** employees in common corporate professions can take at work. Each guide includes why your

English

Privacy settings

Addressing climate change, tangible actions you can take at work, and key considerations and resources to help



GET THE PUBLICATION



05

Discussion

What's my next step?





*Every
Action
Matters*



SYSTEMIC

PRACTICAL

SPIRITUAL/
RELATIONAL

RESOURCES

REWIRING
AMERICA



Help w/ energy household planning

PROJECT
DRAWDOWN



First class climate solutions road map.



Are your investments grade A or D- ?



Solar + efficiency help for congregation

Thanks!

Do you have any questions?

buff@mnipl.org

651-323-3167

mnipl.org



CREDITS: This presentation template was created by **Slidesgo**, including icons by **Flaticon** and infographics & images by **Freepik**

Please keep this slide for attribution

RESOURCES

<https://www.mnipl.org/>

<https://interfaithpowerandlight.org/>

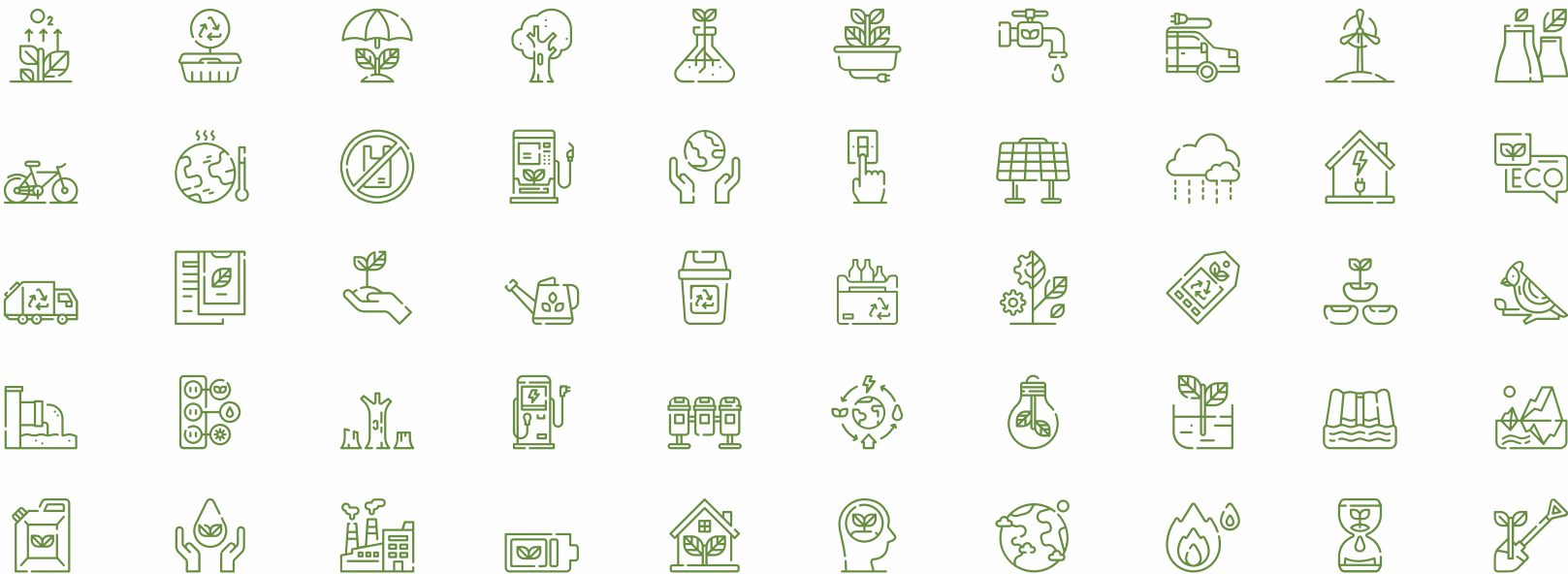
<https://homes.rewiringamerica.org/calculator>

<https://drawdown.org/>

<https://fossilfreefunds.org/>



ICON PACK





Instructions for use

If you have a free account, in order to use this template, you must credit [Slidesgo](#) by keeping the [Thanks](#) slide. Please refer to the next slide to read the instructions for premium users.

As a Free user, you are allowed to:

- Modify this template.
- Use it for both personal and commercial projects.

You are not allowed to:

- Sublicense, sell or rent any of Slidesgo Content (or a modified version of Slidesgo Content).
- Distribute Slidesgo Content unless it has been expressly authorized by Slidesgo.
- Include Slidesgo Content in an online or offline database or file.
- Offer Slidesgo templates (or modified versions of Slidesgo templates) for download.
- Acquire the copyright of Slidesgo Content.

For more information about editing slides, please read our FAQs or visit Slidesgo School:

<https://slidesgo.com/faqs> and <https://slidesgo.com/slidesgo-school>

Fonts & colors used

This presentation has been made using the following fonts:

Fahkwang

(<https://fonts.google.com/specimen/Fahkwang>)

Quicksand

(<https://fonts.google.com/specimen/Quicksand>)

#13234b

#ffffff

#fefefe

#678d41

#c9d887

#5080d4

#394d85

#a2ce9c

#7ec1f4